



Alaska Department of Transportation & Public Facilities

Division of Facilities Services November 30, 2018 Earthquake Response

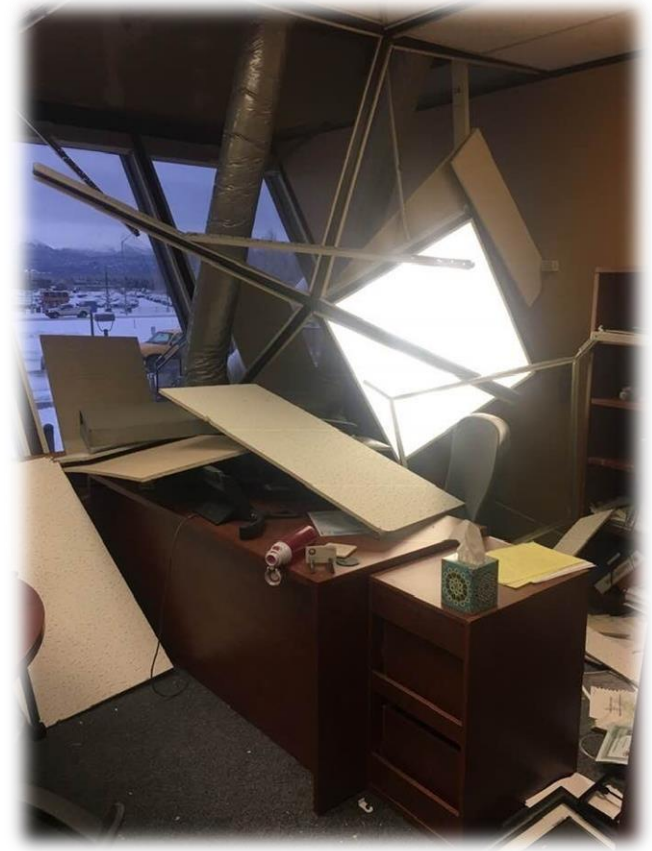
Matt Tanaka, Christopher Hodgin, Colleen Gould, Stephanie Kruse

May 2019

Our mission is to *Keep Alaska Moving* through service and infrastructure.

Emergency Response Process

- Initial Response – Concurrent Action
 - Facility users secured their buildings
 - Establish Command and Control Center
 - Inspections with consultants
- Secondary Response
 - Inspections with volunteers
 - Inspections with Public Facilities Staff



DOT&PF Aviation Building

Command and Control Center

Division of Facilities Services

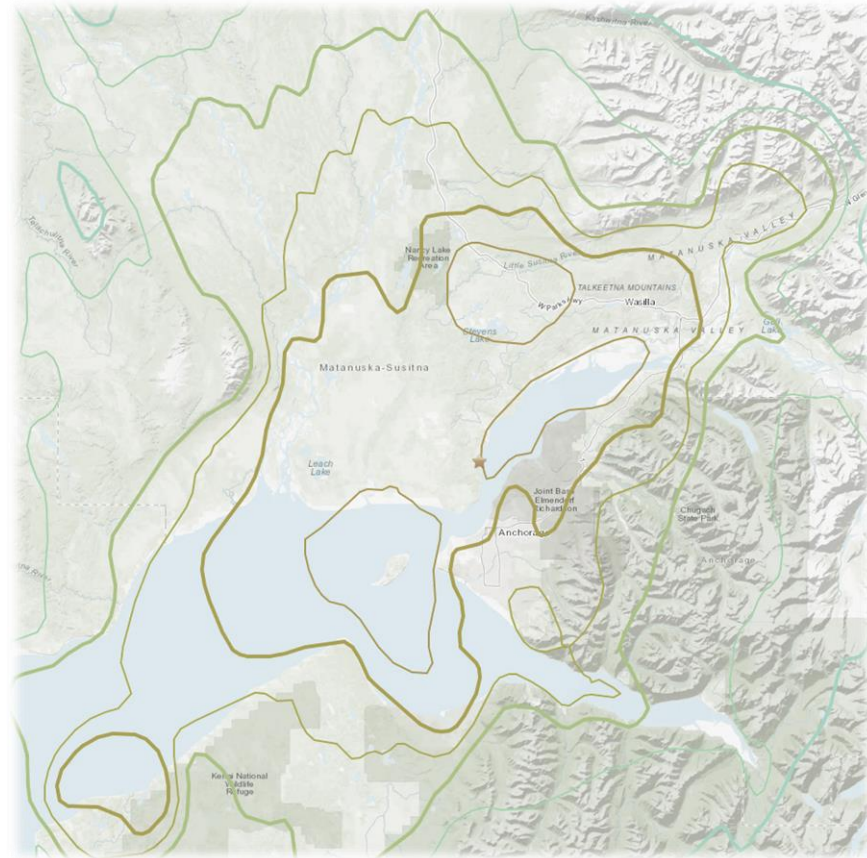
provides for the design, construction, maintenance and care of state facilities

• Immediate Actions

- Team safety check
- Established Facilities ICS Response Team, Center & 24-hr Operations
 - Support from Anchorage, Fairbanks and Juneau personnel
 - Operations, Safety, Design & Construction disciplines
- Initial rapid assessments

• Prioritizing Facility Evaluations

- Based on affected intensity zones – VII, VI, V
- Beginning with critical facilities in highest zones
- Occupied and critical facilities prioritized first
 - Such as Atwood Building, McLaughlin Youth Center, API



USGS Image

<https://earthquake.usgs.gov/earthquakes/eventpage/ak20419010/map>



Command and Control Center

Daily engagement with State Facilities Council and Stakeholders to coordinate observations, inspections, testing and immediate safety needs

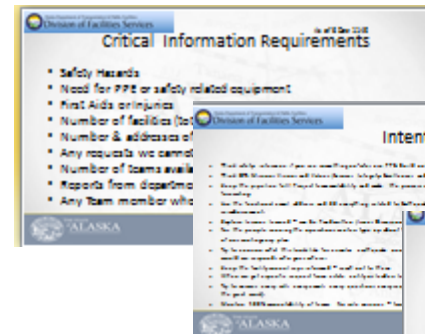


Internal Update Briefs

- Safety Hazards and needed equipment
- Facility inspection metrics
- Teams deployment schedule
- Assistance requirements

Stakeholder Briefs

- Daily briefs to State Facilities Council and DOT&PF HQ
- Reporting on progress and status of inspections



Critical Information Requirements			
Updated Date: 12/18/18 Time: 9:00am			
Dept	Number of Buildings	Met	Subsequent # of Subsequent #
Report Assessments Completed	127		
Special Assessments Completed	88		
Out of 241	24		
# of Buildings L1&L2 (permitted) Insured	Compl	Lead	
# require: unable to complete within 30 hrs	2		
Defects	1		
Inspection Teams (2 person)	8		

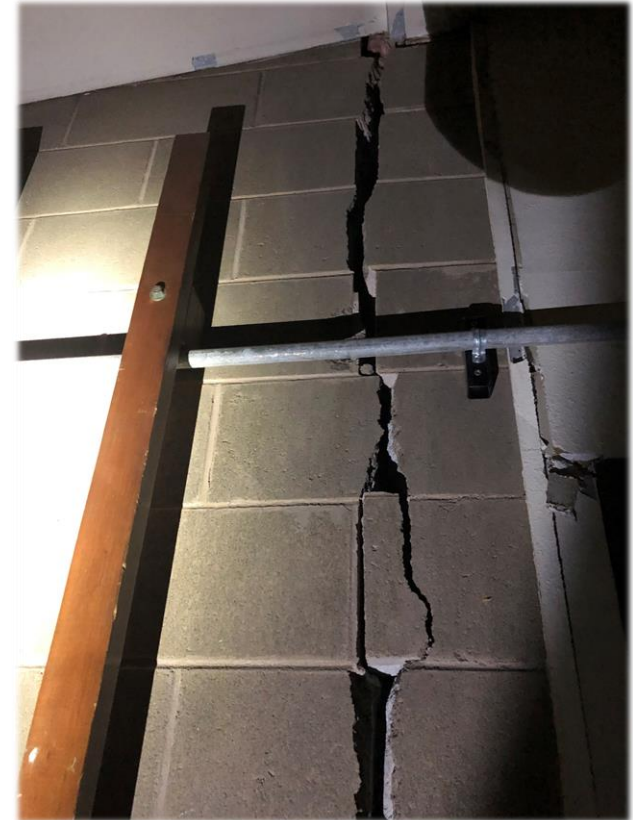
Department	Building Description	Street Address	Town	USGS Intensity	Inspection Status	Piacard Status	Date Complete/scheduled	Notes
02 - DOA	Liny Pacific Parking Garage	517 West 7th Ave.	Anchorage	7	Complete	Green	12/20/18	
02 - DOA	Robert B. Atwood Building	550 West 7th Ave.	Anchorage	7	Complete	Green	12/20/18	
02 - DOA	Geological Materials Center	3651 Fairland Park way	Anchorage	7	Complete	Green	12/20/18	
02 - DOA	Surplus Property Warehouse/Office	2400 Viking Drive	Anchorage	7	Complete	Green	12/20/18	
02 - DOA	Palmer State Office Building	515 East Dahlia Avenue	Palmer	6	Complete	Green	12/20/18	
06 - HSS	Alaska Veterans & Florists Home	250 E. Fireweed	Palmer	6	Complete	Green	12/10/18	
06 - HSS	Mat-Su Youth Facility	581 Springer Loop Road	Palmer	6	Complete	Green	12/10/18	
06 - HSS	Anchorage Pioneer Homes	923 W. 11th Avenue	Anchorage	7	Complete	Green	12/20/18	
06 - HSS	Alaska Psychiatric Institute	3700 Piper Street	Anchorage	7	Complete	Green	12/20/18	
06 - HSS	McLaughlin Youth Facility	2600 Providence Drive	Anchorage	7	Complete	Green	12/20/18	
06 - HSS	Anchorage Public Health Lab	5455 Dr. Martin Luther King Jr. Drive	Anchorage	7	Complete	Amber	12/4/2018	Sprinkler offline in 30% of the building
09 - DMVA	Anchorage RAR Station		Anchorage	7	Complete	Green	12/7/2018	
09 - DMVA	Aleutina Armory Complex		Wasilla/Palmer	7	Complete	Green	12/7/2018	Multiple buildings
09 - DMVA	Building 57503 Recruiting & Retention		JBER	7	Complete	Green	12/7/2018	
09 - DMVA	Building 47430 Hangar 1		JBER	7	Complete	Green	12/7/2018	
09 - DMVA	Building 47433 Hangar 2		JBER	7	Complete	Green	12/7/2018	



Inspections with Consultants

Day of Earthquake

- Governor's declaration of disaster
- Determine Contracting Method
- Identify critical facilities for day 1 inspection
 - Occupied 24/7
 - McLaughlin Youth Center
 - Alaska Psychiatric Institute
 - Potentially significant hazard to the public
 - Atwood Building
- Complete day 1 inspections
- Prioritize buildings for inspection the following day



DNR – Eagle River Forestry Building

Inspections with Consultants

Days After

- Determined priority list
 - Facilities that are occupied 24/7
 - Critical facilities for essential operations
 - Regularly occupied facilities/offices
 - Storage and other unoccupied facilities.
- Assign buildings for inspection
- Coordinate with building owners for access
- Monitor progress
- Prioritize buildings for inspection the following days



CMU damage at Wasilla Police Station (Above)
and at Whitney Road Warehouse (Below)



ACT-20 Trained Volunteers

Alaskan Volunteers -

Coordination provided by the Structural Engineering Association of Alaska (SEAA) and the Anchorage Chapter of the American Society of Civil Engineers (ASCE-Anchorage)

- California Office of Emergency Services (CalOES) registry used to find volunteers
- SEAA & ASCE contacted DOT&PF and other agencies and offered support for inspection efforts
- 27 in state volunteers



Some of the volunteer teams preparing for work on JBER

ACT-20 Trained Volunteers

**Out of State Volunteers -
Coordination provided by the
Alaska State Division of Homeland
Security and Emergency
Management and DOT&PF staff**

- CalOES registry used to find volunteers, negotiated efforts for volunteers with inter-state agreements
- 4 from California
- 3 from North Carolina



Janos found moose sign

Inspection Outcome

- Key Stats

- 360 buildings in 13 days
 - Consultants: 155
 - Public Facilities Staff: 29
 - Volunteers: 176
- 27 buildings per day
- 10 teams in field

- Outcome

- 3 buildings designated “yellow”
 - DFS Annex
 - DOT&PF Aviation Building,
 - DNR Forestry Building
- Remainder “green”
- None “red”

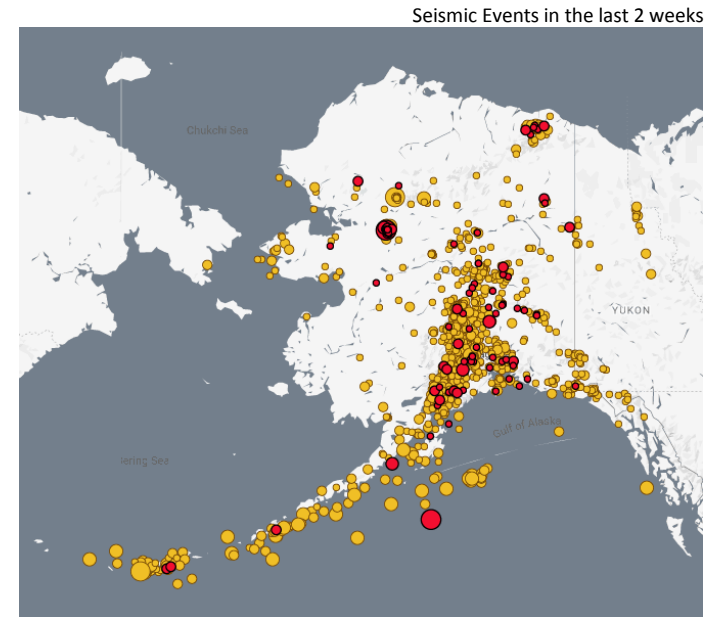


DOT&PF Annex Building

When to Respond?

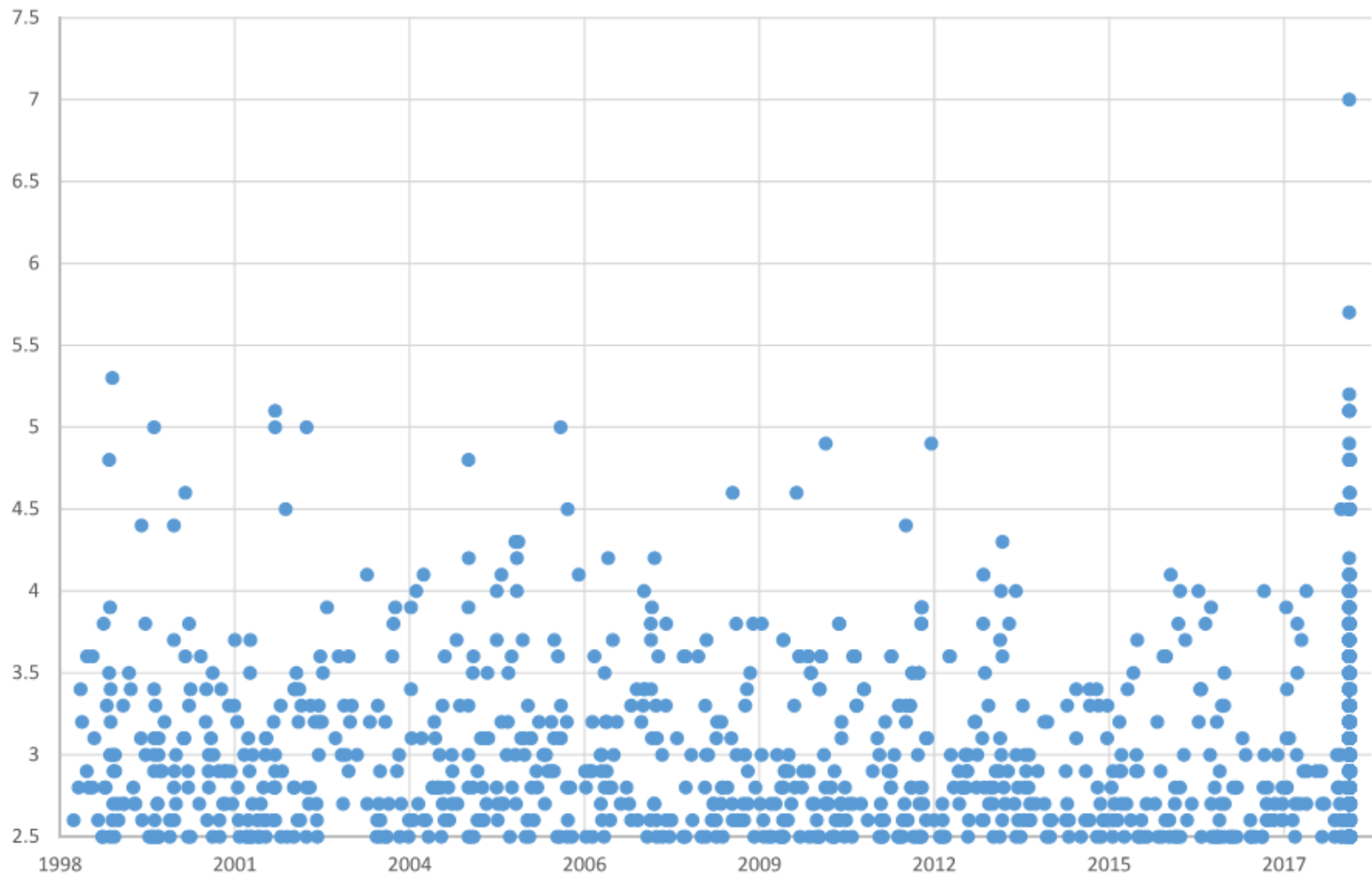
Evaluating Seismic Events

- Local area data spanning 20 years
- Understanding Magnitude & Intensity
- Seismic Event Response Flowchart
 - Authorities consulted
 - USGS Shakemap Background
 - 1964 and 2018 Event Maps



Initial Data

Anchorage Area Earthquakes 1998-2018



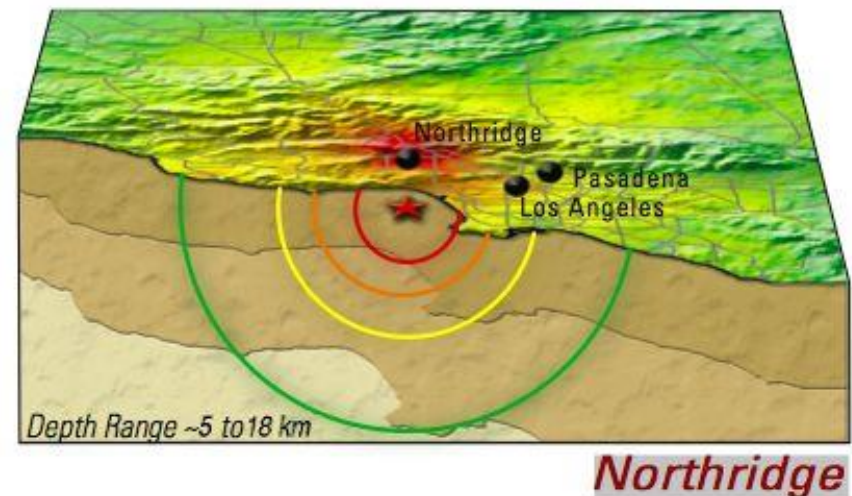
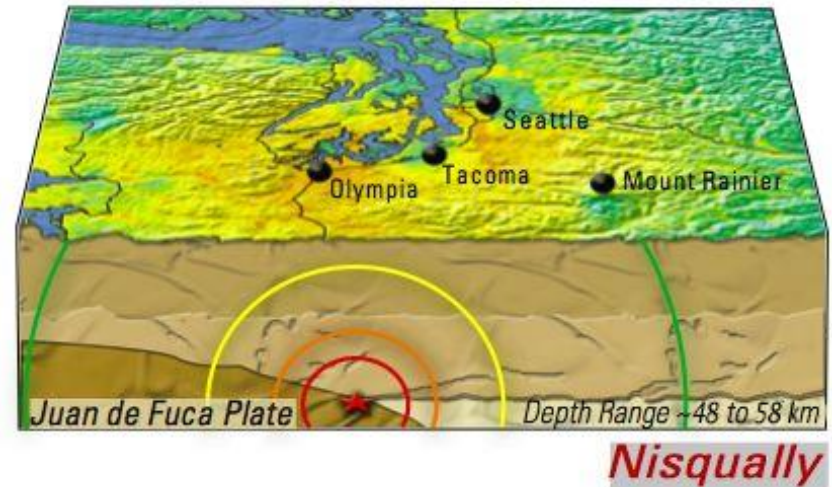
Magnitude versus Intensity

- **Magnitude**

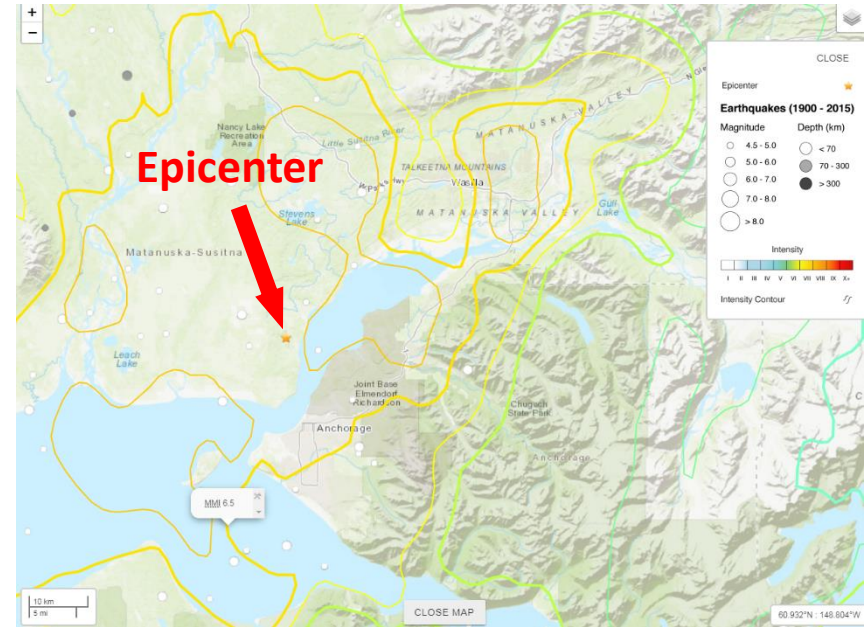
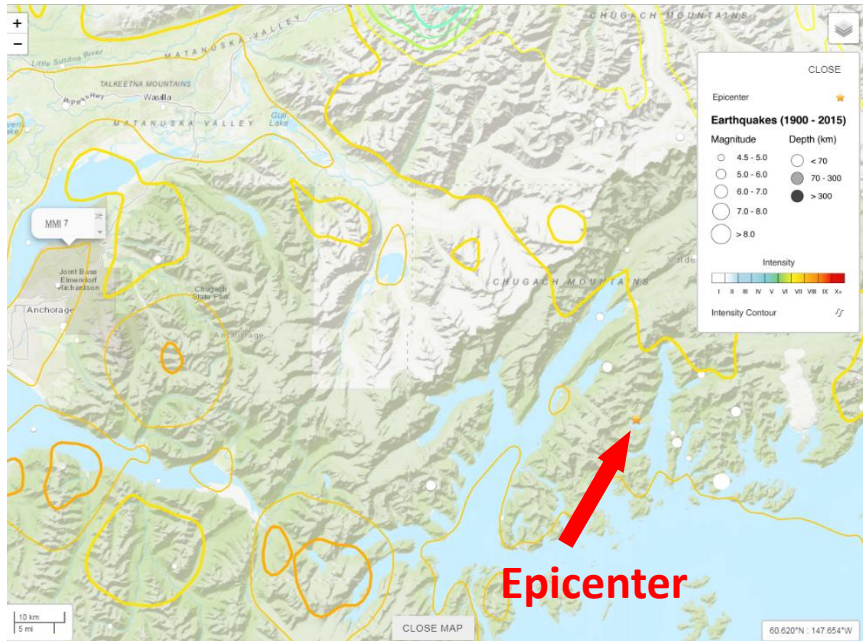
- Total energy released by source
- Common Richter Scale (ML) based on wave amplitude
- Determined by instrument

- **Intensity**

- Strength of shaking at a certain location
- Modified Mercalli Intensity Scale (I to X)
- Factors: geology, rupture direction, duration, distance from epicenter, etc.
- Determined from effects on people, structures, the environment



1964 and 2018 Event Maps

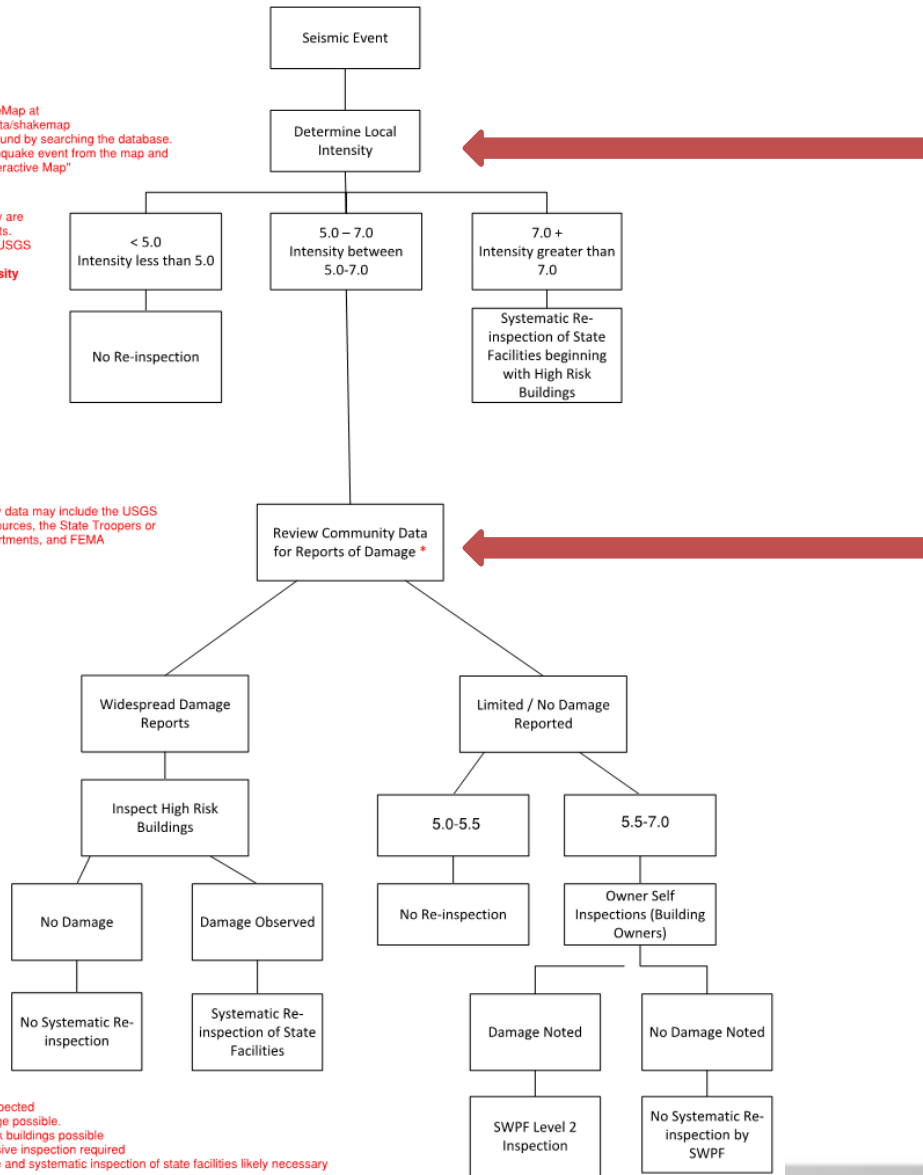


Seismic Response Flow Chart

Reference USGS ShakeMap at earthquake.usgs.gov/data/shakemap
Local intensity can be found by searching the database.
You may select an earthquake event from the map and load the associated "Interactive Map"

Magnitude and intensity are dissimilar measurements.
This chart is based on USGS intensity data using the Modified Mercalli Intensity Scale (MMI)

Sources of community data may include the USGS website, local news sources, the State Troopers or municipal police departments, and FEMA



Anticipated Actions
 5.0-6.0: No action expected
 6.0-7.0: Some damage possible.
 Inspection of high risk buildings possible
 Possible comprehensive inspection required
 7.0+: Comprehensive and systematic inspection of state facilities likely necessary

Intensity Determination

Community Data / Reports of Damage



Questions and Comments?

Anchorage Area Earthquakes 1998-2018

